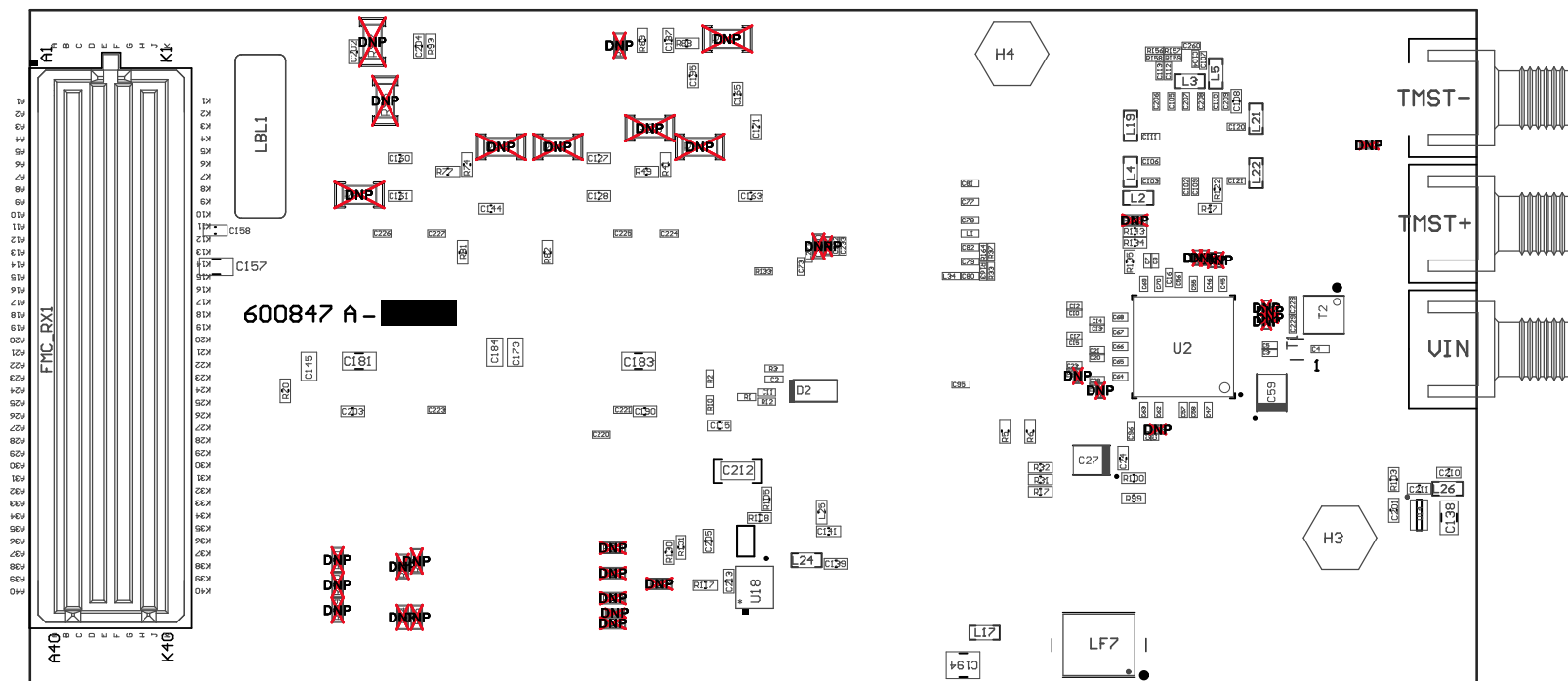


ZZ4 ■ These assemblies must comply with workmanship standards IPC-A-610 Class 2., unless otherwise specified.



Variant	Label text
001	LM15851EUM
002	ADC12J4000EUM
003	ADC12J2700EUM
004	ADC12J1600EUM

PCB VIEWED FROM TOP SIDE	BOARD #: 600847	REV: A	SUN REV: Not In VersionControl
IGNORE -> Top Overlay			
PLOT NAME = Top Assembly Drawing	GENERATED : 9/29/2014 10:17:39 AM		TEXAS INSTRUMENTS



COMPONENTS MARKED 'DNP' SHOULD NOT BE POPULATED, AND MAY NOT BE IN BILL OF MATERIALS
 ASSEMBLY VARIANT: 004_ADC12J1600EVM

PCB VIEWED FROM BOTTOM SIDE	BOARD #: 600847	REV: A	SUN REV: Not In VersionControl
	IGNORE -> Bottom Overlaid		
PLOT NAME = Bottom Assembly Drawing	GENERATED : 9/29/2014 10:17:40 AM	TEXAS INSTRUMENTS	